



FARM MACHINERY DISPERSAL SALE

On Behalf of Applevale Ltd

Friday 28th November 2025

10:30am

Sale at Bretforton House Farm, Bretforton,
Evesham, Worcestershire WR11 7JA.

All Lorries to Follow WR11 7GW.

**AUCTION OF TRACTORS, FARM
MACHINERY, FARM & DAIRY EQUIPMENT &
SUNDRIES**

Find us on 

 **MartEye**

AUCTIONEERS REMARKS & STIPULATIONS

Market Drayton Market Ltd are favoured with instructions from Applevale Ltd of their Farm Dispersal Sale following the sale of their dairy herd. The Sale will be held at WR11 7JA but for the Milking Parlour and Dairy Equipment please follow postcode WR11 7GW. We also ask that all Lorries follow postcode WR11 7GW due to road access.

PRE-SALE

Pre-sale enquiries may be made to the Auctioneer's Office at Market Drayton Market 01630 652926 or visit the website at www.marketdraytonmarket.co.uk
Auctioneer - Ben Baggott - 07791 791356
Auctioneer - Jason Brown - 07774 816384
Vendor - Tom Appleby - 07725 740041
Sale day office phone - 07956 228495.

VAT

The majority of lots will attract VAT at 20%. All purchasers will be required to pay VAT on all VAT qualifying items prior to collection. If items are being exported the VAT element will be refunded to the purchaser when the auctioneers are in receipt of a valid export licence or document confirming arrival of the items in the destination country outside of the UK.

CONDITIONS OF SALE

The Auctioneers' usual conditions of sale will apply and will be posted on the day of the sale.

TERMS OF SETTLEMENT

All accounts to be settled on the day either by cash or debit/credit card or bank transfer into our NatWest—Market Drayton Market Limited T/A. Barbers Auctions Client A/C. Sort code 01-05-48/Account Number 40093239. Anyone wishing to pay by cheque must make suitable prior arrangement with the Auctioneers. We reserve the right to withhold goods until cheques are cleared.

EXPORT OF GOODS

Any Lot purchased at Auction may be subject to export restrictions or may require a licence for export out of the United Kingdom. The Buyer is responsible for obtaining any licences which may be required (including any licence that may be required for import onto the destination country). The delay or denial of any such licence will not be grounds for the Buyer to cancel any purchase.

BUYERS PREMIUM

All purchases will be subject to the following buyers premium of 5% with a minimum of £1 and a maximum of £250.

ONLINE BIDDING

Bidding will be available on Marteye website or mobile app. Additional 1% charge for online purchases. www.marteye.ie



CATALOGUE

Sale to commence at 10:30am prompt

**THE CATALOGUE IS COMPRISED FOR DESCRIPTION PURPOSES ONLY AND
MAY DEVIATE FROM THE ORDER OF SALE.**

Whilst statements given in this catalogue are believed to be correct to the best of
the vendor's knowledge, no warranty is given or implied.

**VIEWING DAYS : Thursday 27th November from 1pm-4pm or on the
day of the sale from 9am.**

**For the Sale please follow the postcode WR11 7JA
All Lorries to Follow WR11 7GW for loading purposes**

LIVESTOCK EQUIPMENT & SUNDRIES

- AI Flask & Content
- 48 Single Calf Tel Calf Hutches c/w wire fence fronts and buckets
- 3 Agri Plastics Multi Calf Hutches c/w Front Penning Hurdles
- 7 Symms Fabrications Calf Pens (12 feet by 12 feet)
Penning 12 feet by 12 feet, c/w Water Bowels
- 450 IEA Super comfort Cubicles and Brisket Boards (8-12 years old)
- 75 Cantilever Cubicles (Aged)
- 500 Fairfield Cubicle Mats (8-12 years old)
- 2 x 18 Ton Collinson Feed Bins (Aged)
- 50 Calf Coats
- 9 Hang on Calf Creep Feeders
- Qty Single Milk Teat Feeders
- Qty Stallion 13 point hang on Milk Feeders
- Hoof Trimming Electric Foot Crush (2013)
- Weigh base for crush c/w Scales and Load Bar
- Gibson Single Portable Milking Machine (7/8 years old)
- Stallion 50 Point Trailed Calf Milk Feeding Trailer/Station
- Qty Rectangular Concrete Water Troughs
- Qty Round Concrete Water Troughs
- Qty Rectangular Concrete Tough used for Salt Blocks



- Qty West Country Concrete Quad cattle feed Bunkers
- Qty Raised Galvanised Cattle Feeding Troughs 8 foot x 2.6 foot x 2.3 foot high
- Qty Ring Feeders (Cattle)
- Qty Ring Feeders (Calves)
- 4 x Portequip Cattle Creep Feeders
- Rectangular Cattle Feeder
- Compressor
- Qty IBC's
- Qty Orange Juice Containers
- Qty Gates
- Qty Cattle Hurdles
- Calving Jack
- Ridley Rapper Electric Fence Distribution Dispenser
- Qty Pig Tail Electric Fence Posts
- Qty Electric Fence Reels and Wire
- Qty Plastic Fence Post
- Qty Manholes and Covers
- Qty Granite Blocks
- Qty Cotswold Stone
- Qty Breeze Blocks
- Qty Thermalite Blocks
- Qty Blue Drive Bricks
- Qty Fibre Cement Roof Sheets
- Qty Guttering and fixings
- Qty Bagged Magnesium Flakes
- Qty Nadins Hydramix Lime
- Qty 25 mm HD Black Hose
- Qty 40 mm HD Blue Hose
- Qty 44 mm Blue Hose (New 60 meter)
- Qty 40 mm Yellow Hose
- Qty 25 mm Yellow Hose





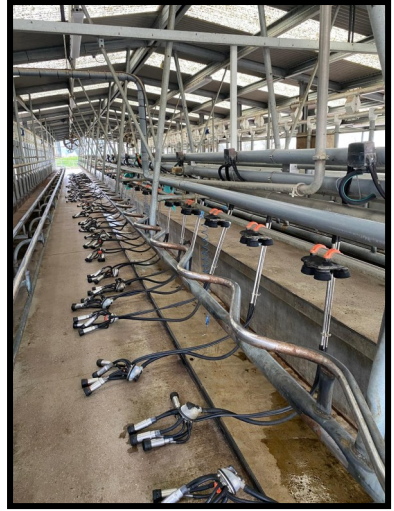
DAIRY EQUIPMENT

(THREE PHASE)

The Milking Parlour & Dairy Equipment are Located at WR11 7GW.

- Milfos 50/100 Milking Parlour, 50 Units, Pulsation, 2 reception Vessels, Milk Line and Wash Line. Randrup Stallwork (2015)
- 80 EB Feeders (40 each side) (2022) c/w Auger system (to be removed from Roxell Feed Bin)
- 50 Wykaito Milk Meters
- GEA V Cool 30,000 litre Tower Silo Bulk Milk Tank (2015)
- Fab Dec Dari Kool 300 kw (2015)
 - ◊ c/w GEA Twin compressors
 - ◊ c/w Arbel Commander Wash System
 - ◊ c/w GEA Hot Water boiler 360 litres
- Milfos Top Load Milk Filter (2015)
- Fab Dec PCB2/165-15 Plate Cooler (2025), 165 litres per minute
- Fab Dec 4000 litre bulk milk tank, no compressors.
- Saber Auto ID Sheading Gate with Alflex Technology (2022) c/w Jefferson 100 litre Air compressor (2022)
- 500 Alflex Sence Hub Auto ID Collars (3 ½ years old, 3 ½ years battery life left) c/w Control Unit
- 3 x 25,000 litre Endromax Water Tanks
- Roxell 30 Ton Feed Bin (2015)
- 4 x Hydor Parlour Fans
- McConnal Water Driven Backing gate and scrapper (2015)
- IBC Teat Dip (Unopened)
- Fabdec Ice Builder (not in use)
- Compressors (not in use)

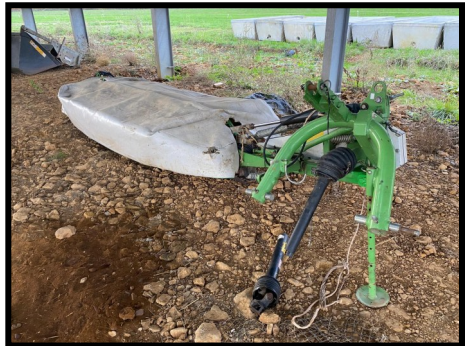




FARM MACHINERY & ATTACHMENTS

- JCB Q Fit Bucket (2021) (Damaged) 2 Square Meter Capacity
- Spread A Bale Maxi HD (2021) c/w Q Fit Brackets
- Browns LM2 Post Hammer c/w Q Fit Brackets (2025)
- Simba 9 metre Hydraulic Folding Rolls (11.5/80/15.3 Tyres)
- Samasz Samba 2 Mower, 7 Drum (2016)
- Einbeck 6 metre Grass Harrows
- Strimech 8 foot Shear Grab (2018)
- Flat Roll
- PTO Driven Slurry Stirrer
- Tad Len TL1012 1000 litre Spayer (2014)
- Sherbourne 150 Cubicle Bedder (Fire Damage)
- Trailed Water Bowser Approx 8000 litre
- Side Loading Zero Grazing Feed Trailer
- Yard Scrapper (working order)
- Yard Scrapper (Not in use)
- Various Parts and Rubbers for the above
- Aksa Generator AJD 110 (2008) 100kva 230-400 volt
- Fann Slurry Separator (2012), c/w Cri Man Pump (2022), Cri Man Mixer (2022).
- Galvanised Gantry for the Separator.
- Malgar Irrigation System and Welvent Pump
- PTO Driven Generator (20 KVA) Three Phase
- Ifor Williams 12 Foot Tandem Axle Livestock Trailer
- 7 Foot Single Axle Calf Trailer
- 7 Foot Tandem Axle Calf Trailer
- JCB Dual HD 2.3 Metre Q Fit Bucket (2025) Metre Removable Blade, 2 Square Metre Capacity.







TRACTORS

- Kubota M125 GX4 4WD Tractor (VU21 XCO) c/w MX U410 Loader with Q Fit Head (2023)
 - ◇ 1600 Hours,
 - ◇ Front Tyres 420/70 R24
 - ◇ Rear Tyres 520/70 R38
 - ◇ Warranty (5 Years)

- JCB 538/60 Agri Extra Loadall (LM25 YBU)
 - ◇ 500 Hours,
 - ◇ Q Fit Headstock,
 - ◇ Bibload Tyres (460/70 R24)
 - ◇ Warranty (5000 hours or 48 Months)



INSTERTED ITEMS

- 9 leg Cousins Subsoiler
- Herbst Twin Axle Lowloader
- 10 metre Berthaud Sprayer
- KRM 24 m Spreader
- Sulky Combi Drill & Frame







NOTES





Ben Baggott
07791 791356

Jason Brown
07774 816384

Main Office
01630 652926

Dispersal Sale Number
07956 228495



Market Drayton Market LTD

The Agricultural Centre, Adderley Road, Market Drayton TF9 3SW