



Saturday 26th April 2025

10:30am

# FARM MACHINERY DISPERSAL SALE

On Behalf of R.D Bramall

at Newfield Hall Farm, Minshull Vernon, Cheshire  
CW10 0LR

Tractors, Trailers, Farm Machinery,  
Farm Equipment & Sundries

Find us on 



**MartEye**

## **AUCTIONEERS REMARKS & STIPULATIONS**

Market Drayton Market Ltd are favoured with instructions from Mr RD Bramall to undertake his farm dispersal sale following the relinquishment of his tenancy at Newfield Hall Farm.

### **PRE-SALE**

Pre-sale enquiries may be made to the Auctioneer's Office at Market Drayton Market 01630 652926 or visit the website at [www.marketdraytonmarket.co.uk](http://www.marketdraytonmarket.co.uk)  
Auctioneer - Jonty Cliffe - 07595 453306.  
Vendor - David Bramall - 07714 765323  
Sale day office phone 07956 228495.

### **VAT**

The vendors are registered for VAT purposes and at the standard rate will be charged in addition to the hammer price where applicable.

### **CATERER**

A caterer will be in attendance to serve light refreshments.

### **CONDITIONS OF SALE**

The Auctioneers' usual conditions of sale will apply and will be posted on the day of the sale.

### **TERMS OF SETTLEMENT**

**All accounts to be settled on the day either by cash or debit/credit card** or bank transfer into our NatWest—Market Drayton Market Limited T/A. Barbers Auctions Client A/C. Sort code 01-05-48/Account Number 40093239. Anyone wishing to pay by cheque not known to Market Drayton Market Ltd must obtain a Bankers Reference or make suitable prior arrangement. Auctioneers reserve the right to withhold goods until cheques are cleared.

### **EXPORT OF GOODS**

Any Lot purchased at Auction may be subject to export restrictions or may require a licence for export out of the United Kingdom. The Buyer is responsible for obtaining any licences which may be required (including any licence that may be required for import onto the destination country). The delay or denial of any such licence will not be grounds for the Buyer to cancel any purchase.

### **BUYERS PREMIUM**

All purchases will be subject to the following buyers premium of 5% with a minimum of £1 and a maximum of £250

### **ONLINE BIDDING**

Bidding will be available on Marteye website or mobile app. Additional 1% charge for online purchases. [www.marteye.ie](http://www.marteye.ie)



## CATALOGUE

**Sale to commence at 10:30am prompt**

**THE CATALOGUE IS COMPRISED FOR DESCRIPTION PURPOSES ONLY AND  
MAY DEVIATE FROM THE ORDER OF SALE.**

Whilst statements given in this catalogue are believed to be correct to the best of the vendor's knowledge, no warranty is given or implied.

**VIEWING: Friday 25th April from 1pm-4pm or  
on the day of the sale from 9am.**

### **EQUIPMENT & SUNDRIES**

- Stihl MS390 Chainsaw
- Oxford 270 Mig Welder
- Olympic Bantam 180amp Arc Welder
- Qty of Small Workshop Tools
- Vintage Hunt & Co Grinder
- Trolley Jack
- Draper Pillar Drill
- Qty of Dumpy Bags of Oak Logs
- Garden Fert Spreader
- MTD 465 Chipper
- Endura Max Quad Sprayer
- Clay Pigeon Trap
- Belle Electric Mini Mix 150 Cement Mixer
- 20KVA Generator PTO Driven - Single Phase
- Single Phase Compressor
- Fibre Glass Bulk Tank - 6ftx4ft (Used for Chemical Storage)
- JFC Wheel Barrow
- 3x Sandstone Troughs
- Wolseley Major Rotavator

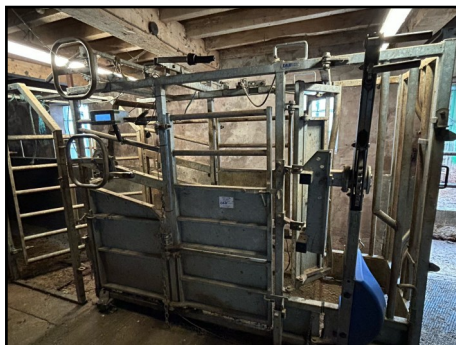


## **AGRICULTURAL EQUIPMENT & SUNDRIES**

- Claas Pick Up Hitch
- Dual Wheels 16.9/34 Stocks
- Qty of Spare Tractor Tyres
- Massey Ferguson Mud Guards
- Qty of Various Length Gates
- Fullwood FR2 Vacci Pump - Electric Motor
- Fullwood Milk Vacuum Pump Q3 - Electric Motor
- Vintage Piston Milking Vacuum Pump
- 2 x Watson 1T Bull Beef Feeder
- 12 x 5ft Feed Bunkers
- Qty of Electric Fence Posts & Reels
- 50 x Pig Tail Fence Posts
- Qty of Electric Fencers
- Ventilation Fan / Air Sock - 80ft
- 8 x 3ft Hook on Troughs
- 4 x 14ft Heavy Duty Galvanised Standing Troughs
- Qty Of Small Water Troughs
- Qty of Calf Feeders
- Ritchie De-Horning Calf Crush
- 7 x Galvanised Calf Pens
- 1.5T Tractor Weight Block
- IAE Chieftain Cattle Crush c/w Weigh Scales, Head Scoop, Rump Bar, Pharm Weigh Scales
- Cattle Race inc. 4 x 10ft Sections, Kiosk, No Return Gate, Sliding Gate & Two Curved Sections



- 150 x Circa Gravel Bags
- 15 x Concrete Sleepers
- 3 x Ring Feeders
- Various Length Silage Nets
- 10 x John Deere 50 Series Tractor Weights
- Hunt Roller Mill



## **BUILDINGS, FIXTURES & PRODUCE**

- 12T ACL Fibre Glass Bin
- 16 x 2023 Quadrant Hay Bales
- Silage Clamp - 95 x 45ft
  - ◇ 5 Bay 15ft Panels & 1 Bay 20ft Panel
  - ◇ 18 Inch Girders
  - ◇ Constructed in 1990
- 2006 Constructed 90ft x 42ft Steel Portal Frame Cubicle Building with a 4'6" Cantilever
  - ◇ Concrete Panels & Timber Boarding Walls
  - ◇ Fibre Cement Roof
  - ◇ 9 Inch Purlins
  - ◇ 46 Cubicles
  - ◇ Two Water Troughs



## **AGRICULTURAL MACHINERY**

- Bale Grab - Trima Brackets
- 4 Tine Bale Spike - Trima Brackets
- Parmiter ASG200 Shear Grab - Trima Bolt on Brackets
- 2m Loader Bucket - Euro Brackets
- ALO Muck Grab - Euro Brackets
- Man Basket - Euro Brackets
- Ransomes Mole Plough
- 2022 Oxdale Log Splitter
- Twose Yard Scraper
- Kverneland KD832 Straw Chopper
- Kverneland KD814 Straw Chopper
- 8ft Cambridge Roller
- 17ft Slurry Stirrer
- Major LGP2050 Slurry Tanker
- 1993 Bailey 12T Grain Trailer
- 8T Hydraulic Tipping Trailer - Super Singles, Alloy Body & Hydraulic Tail Gate
- 2021 14ft Ifor Williams Triaxle Livestock Trailer
- 22ft Twin Axle Bale Trailer - Hydraulic Brakes
- Twose 10ft Land Roller
- Kuhn MDS921 Fert Spreader
- Twose CRT9 Rotary Topper
- 2004 Krone 4 Rota Tedder
- Einbock 5m Grass Harrows





## TRACTORS, TELEHANDLERS, ATV

- **2006 Honda TR Quad Bike**
  - ◇ 3543km, 597 hours
- **Ford 4610 Tractor (MMB 907Y)**
  - ◇ 9,400 hours, V5
  - ◇ 2WD, New Block at 4,000 hours
- **New Holland TL100A Tractor (DK06 MTY)**
  - ◇ c/w Trima 3.0P Loader
  - ◇ R. BKT420/85R34
  - ◇ F. BKT340/85R24
  - ◇ Owned from New, 3 Spools
  - ◇ 7327 hours
- **1968 Massey Ferguson 135 Tractor (RTB 494G)**
  - ◇ V5, Pick up Hitch
  - ◇ 41 Hours since Rebuild
  - ◇ Full Engine Rebuild & Restoration
- **Ford Ranger Thunder Pick-Up (MV09 SHZ)**
  - ◇ 112,000 Miles
  - ◇ MOT until 13th August 2025





## **INSERTED LOTS BY PERMISSION**

- Qty of Harris Security Fencing
- Insulated Wydale Containers
- 5 x Large Matching Stone Pier Caps
- 2 x Pitch Pine Wooden Beams
- Antique Chaff Cutter & A Collection of Antique Tools
- 2 x “Mexican Hat” Cast Iron Pig Feeders
- Electric Bale Elevator - Single Phase
- 40 x 8-gallon Glass Milking Jars
- Large Wooden Feed Trough
- 2 x Metal Ring Feeders
- AI Flask complete with Lockable Container
- Poldenvale Foot Trimming Crush
- Rubber Scraper to fit A frame or 3-point linkage
- Feed Trailer
- Pottinger Single Rake Rowing Up Machine
- Silage Pusher to fit 3-point linkage or A frame
- AG Box Scraper
- AG Sawdust Dispenser 175 to fit 3-point linkage
- John Deere 1360 Mower
- Fleming 800 Topper
- Tractor Mounted Log Splitter
- **Massey Ferguson 35 Tractor** - approx. 9807 hours
- **John Deere 2650 2wd Tractor** (J997 EAT)
  - ◇ 7435 hours & V5
- **1983 International 585 2wd Tractor** (A330 TDM)
  - ◇ Owned from New, 7860 hours & V5



Jonty Cliffe

07595 453306

Office Number

01630 652926

Dispersal Sale Number

07956 228495



Market Drayton Market LTD

The Agricultural Centre, Adderley Road, Market Drayton TF9 3SW